



Bridging the gap between policy and knowledge
on biodiversity in Europe

Call for Nominations for Members of the Knowledge Coordination Body - Eklipse CfKCB.5/2023

Deadline for Call: March 24th, 2023

Announcement of the KCB selected members: first week of April
2023

Period in office: April 2023 – March 2026
(re-election possible)

1) Invitation to become a member of the Knowledge Coordination Body (KCB)

Eklipse is inviting applications from different fields of expertise to join the Knowledge Coordination Body (KCB) from April 2023 until March 2026. The selected applicants will join the current KCB constituted by members selected in June 2022 (more information on the members can be found on the [Team webpage](#))

The KCB is the decisional body of Eklipse. It selects the requests from policy and other societal actors and the experts who will answer those requests, with the support of the Eklipse Strategic Advisory Body (SAB). It organises and accompanies the knowledge synthesis processes within Eklipse and coordinates other tasks required in the self-sustaining mechanism for evidence-based and evidence-informed policy on biodiversity and ecosystem services. This new call for nomination corresponds to the end of the mandate of the third KCB (period in office: April 2020 to March 2023). All current members are allowed to re-apply to this call. Due to an increased number of Eklipse activities and a growing number of knowledge synthesis processes that the KCB will have





to oversee in the coming years, Eclipse is aiming at selecting a minimum of twelve new members.

- Do you have expertise and interest in enhancing the Science-Policy Interface?
- Would you like to contribute to policy-relevant processes?
- Do you want to contribute to the selection of policy-relevant requests to be addressed?
- Are you interested in collaborating in a trans-disciplinary and multicultural setting?

Then please express your interest in participating as a KCB member by filling out the [Eclipse application form](#).

2) Eclipse and its added values

Eclipse coordinates innovative and transparent approaches for science, policy and societal actors to jointly provide the best available evidence, leading to better-informed decision-making. The topic and/or evidence needs (called "requests" in the Eclipse process) are identified by policy and other societal actors.

The added values of the Eclipse approach are multifold ([see Figures 1 and 2 below](#)):

1. Respond directly to policy and other societal actors' knowledge needs.
2. Frame questions directly with requesters to better understand what knowledge they need, for what purposes, in what timescale, and with which resources.
3. Build on existing knowledge and link requests for knowledge to the most relevant knowledge holders.
4. Include the expertise of a Methods Expert Group, which has identified 20 different knowledge synthesis methods and suggests the most relevant methods to match requesters' needs.
5. Build its activities on a strong Ethical Infrastructure and a strong focus on networking and institutional support.



The functions and added values of Eklipse

5 functions

- Answer key questions from policy and/or society by mobilising and synthesising the best available knowledge and experts
- Identify current and future emerging issues of policy makers and citizens related to biodiversity and ecosystem services

- Create a responsive and active network of experts and knowledge holders across Europe that get acknowledged for providing their knowledge
- Improve citizens engagement in SPI activities
- Link up with international SPIs such as IPBES, SBBSTTA-CBD

Ethical Infrastructure

- 12 measures:
- Guiding values
 - Code of ethics
 - Training programmes
 - Declaration of conflict of interest
 - Management body
 - Complaint mechanism
 - Transparent selection procedure
 - Reinforced measures
 - Legal framework
 - Crisis management group
 - Feedback processes
 - Public consultation of all our outputs

A proven and robust process to answer policy relevant requests

Advanced Governance structure

Method Experts

Strong focus on networking



www.eklipse.eu

Figure 1: The combination of components making Eklipse unique.

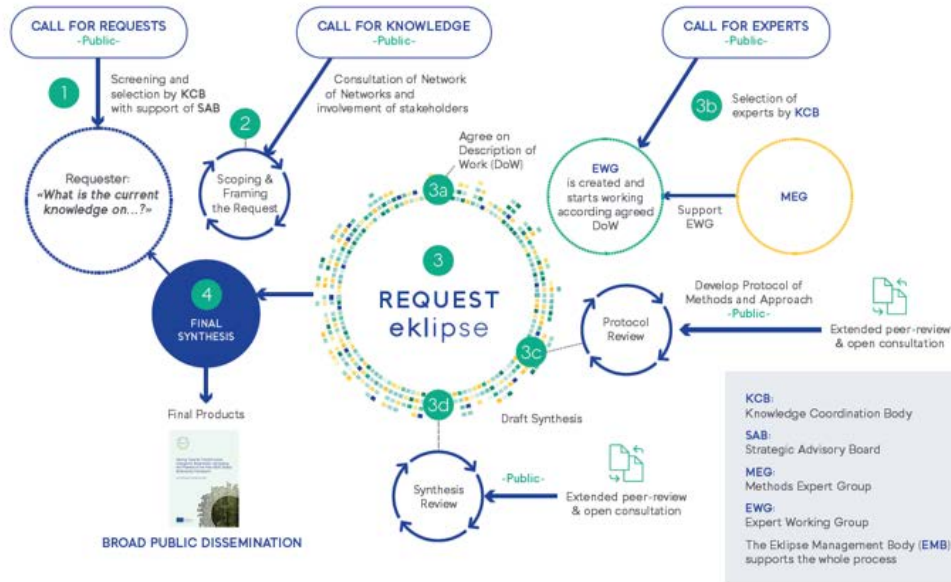


Figure 2: The Eklipse process of answering a request.

For more information, please consult [our website](#) and check other resources, such as our [video "Eklipse spread its wings."](#) and our [podcast "How Eklipse makes a difference."](#)





3) Roles and tasks of the KCB

(Please refer to the [KCB Guidance Note](#))

Role of the KCB

The Knowledge Coordination Body (KCB) is responsible for managing the answering of requests by coordinating joint evidence processes. The KCB also coordinates the identification of research priorities and emerging issues, the [European Network of Networks for Science-Policy-Society Interfaces on Biodiversity \(ENoN\)](#), and encourages societal engagement.

Main tasks of the KCB

- Contribute to selecting and scoping requests from policy and other societal actors (more information can be found in the Guidance note 7b, “scoping with the requester”)
- The KCB Chair, together with the Eklipse Management Body, appoints a ‘KCB focal point’ and a deputy for each request. The focal points and deputies oversee all joint evidence processes in close collaboration with the Eklipse Management Body, thereby ensuring continuity throughout the request. They select the experts to form Expert Working Groups and ensure that the experts comply with the procedures, rights/rules/ethics, and quality controls of Eklipse.
- The KCB also coordinates requests and processes concerning the identification of research priorities and emerging issues, the Network of Networks, and encouraging societal engagement.

For a complete list of tasks and a more detailed description regarding the KCB role, please refer to three Eklipse guidance notes (Gn): Gn2. [The Knowledge Coordination Body](#); Gn2a. [Selection the Knowledge Coordination Body](#); Gn 7b. [Scoping with the Requester](#), Gn 7c. [Preparing and managing calls for experts](#).

4) What to expect and what is in it for you?

- The KCB members are expected to dedicate about 10-15% of their time over the period in post. Please note that the KCB work is very irregular, sometimes with nearly no work required and at others, where up to 30% of your time may be required. As such, it is convenient to explicitly consider how your engagement in Eklipse will benefit your current work and vice versa.
- The KCB members are expected to work in close collaboration with the Eklipse Management Body.
- The KCB members are expected to comply with the Eklipse guidance notes and ethical infrastructure.

→ You should consider applying to the Call for KCB if:

- You are motivated to make a difference by contributing to strengthening the knowledge evidence in the area of biodiversity and ecosystem services and by building bridges between science, policy and society through knowledge synthesis, identifying research priorities, and contributing to building the Network of Networks.
- You find it significant to translate research results into useful inputs for policy and co-develop a policy question comprehensible for researchers.
- If you are increasingly frustrated by the dissonance between the amount of existing relevant knowledge and decision/action at a policy scale, you see an opportunity through your involvement in the KCB to do both, strengthening efforts in providing knowledge synthesis to support policy and decision making and to understand more about the needs of decision-makers.
- You critically analyse and reflect on science-policy interface (SPI) processes and would also like to contribute to these processes.
- You already contribute to SPI processes and would like a European perspective.
- You would like to collaborate with an international team.

5) Support provided by Eklipse mechanism

Eklipse team (see Figure 3 below describing *Eklipse Governance structure*): The KCB will be supported by the Eklipse Management Body in all tasks. The Eklipse Management Body will be responsible for direct communication with experts, managing the extended peer-review process, organising meetings, compiling requests and nominations for expertise. The KCB will also be supported by the Eklipse Strategic Advisory Body (SAB) regarding important decisions, such as the selection of requests to be processed by Eklipse, although the KCB takes the final decisions.

Financial support: Eklipse activities rely on in-kind contributions, for instance, in similar science-policy processes. The benefits for experts and institutions arise from networking and the visibility of their expertise to policy and society, particularly through reports and other products. Eklipse will actively support the visibility of experts and their institutions and promote their contributions. In addition:

- All meetings will be organised by Eklipse, and travel costs will be reimbursed as needed.
- Individual experts from Eastern and Southern European countries might be supported via an honorary contract upon request.



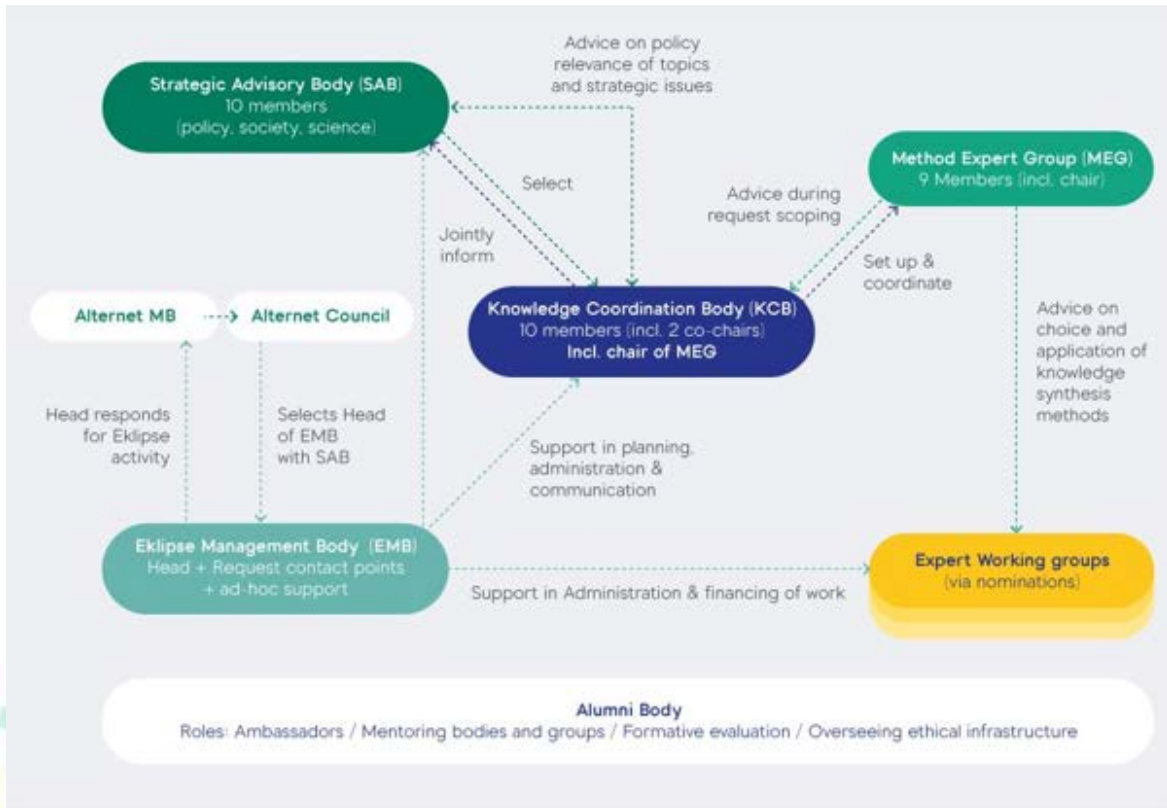


Figure 3: Governance structure of Eklipse: This figure highlights the key role of the KCB within the Eklipse Mechanism as well as the main interactions of the KCB with the other Eklipse bodies, i.e. Strategic Advisory Body (SAB), the Eklipse Management Body (EMB), the Method Expert Group (MEG) and the Expert Working Groups (EWG).

6) Eligibility and applicant information

Selection process and criteria for the composition of the KCB

All eligible applications will be reviewed by the Strategic Advisory Board who will select and set up the KCB to represent the full disciplinary spectrum required, different geographical regions of the EU, and gender balance. The KCB will cover diverse and complementary skills and will interact with relevant stakeholders to ensure better methodological choices and maximal uptake of outputs.

Selection criteria for the KCB

- Motivation to play a part in the Eklipse mechanism and contribute to making it self-sustainable.
- Demonstrated expertise covering one or more of the following:
 - coordinating knowledge synthesis processes

- engagement in international science-policy processes
 - leading foresight initiatives
 - network coordination
 - business plan development
 - managing societal engagement in science
 - expert mobilisation and selection processes
 - ethics and management of conflict of interests
 - knowledge exchange.
- Experience with biodiversity and ecosystem services and/or sustainable development, ideally at the European level.
 - Experience at the Science-Policy Interface or overview of a policy area relevant to biodiversity, such as environmental, agricultural, marine, regional development, infrastructure planning, or sustainable consumption policies.
 - Experts will have to comply with the principles and rules of Eklipse (e.g. conflicts of interest policy, non-disclosure agreement, etc. More information can be found on the [Ethical Framework webpage](#)).
 - We encourage applicants to discuss with their institutions and/or with Alternet or other networks to endorse their application to ensure mutual benefit.

7) Application and notification of results

How to apply

Before applying, you are strongly encouraged to read all relevant Eklipse guidance notes (Gn)¹ to help you understand better the work and vision of Eklipse and the roles of the different bodies.

The application form for KCB members can be found on the Eklipse website under '[Open calls](#)'. The completed form should be submitted by midnight on March 24th, 2023, at the latest.

Interested parties are strongly encouraged to ask their organisation/network/community to provide them with a letter of support, which they will be able to upload directly in the application form or send to Eklipse Management Body (EMB) at emb@eklipse.eu. Eklipse sees many added values in asking for this letter of support, i.e. for the selection process, but mainly to start a dialogue between the interested parties and their organisation/community (and eventually Eklipse) on the implications of joining the KCB and may help the interested party to get recognition within their organisation/community for their work for Eklipse.

Should you require any further information, do not hesitate to contact us at emb@eklipse.eu.

¹ Gn 2. [The Knowledge Coordination Body](#), Gn 7b. [Scoping with the Requester](#), Gn 7c. [Preparing and managing calls for experts](#)





Announcement of results

Successful applicants will be notified directly by the EMB in the first week of April 2023. As soon as they accept the nomination, the names of selected experts will be made public on the Eklipse website. The kick-off meeting of the new KCB members will be decided on the availability of both new and current KCB members but is expected to happen in the second half of April 2023.

Data and information policy

The result of this call will be made publicly available through the Eklipse website, and transparent procedures will apply, following [Eklipse's privacy policy](#).