



EKLIPSE

Knowledge & Learning Mechanism
on Biodiversity & Ecosystem Services

**Developing the science-society-policy interface on
biodiversity and ecosystem services in Europe**

EKLIPSE Team

Energy Weeks, Brussels 2019

www.eclipse-mechanism.eu

What is the EKLIPSE project?

- EKLIPSE funded as CSA in H2020
- Duration: Feb 2016 – Feb 2020
- 10 partner institutions facilitating wider involvement
- All our budget is used to encourage external contributions to...



The screenshot shows the EKLIPSE website homepage. At the top, there is a navigation bar with a 'LOG IN' button, social media icons for Twitter, Facebook, and LinkedIn, and a search bar. Below this is the EKLIPSE logo and tagline: 'Developing a mechanism for supporting better decisions on our environment based on the best available knowledge.' Underneath the logo are four buttons: 'THE DIFFERENCE WE WANT TO MAKE', 'HOW CAN WE MAKE A DIFFERENCE?', 'HOW TO GET INVOLVED?', and 'ACTIVITIES'. A central banner features a collage of images showing various events and people. Below the banner, there are three main sections: 'Open calls' with a message about analyzing results for the Call for Requests and nominations for the EKLIPSE Knowledge Coordination Body; 'News from the Network' with two bullet points about a science-policy-society conference and a foresight workshop; and a 'Barometer' section asking if Nature-Based Solution (NBS) is a concept that would help biodiversity conservation, with 'YES', 'NO', and 'NBS?' buttons.

Why is EKLIPSE needed? To improve the interface

Many diverse science-policy-society interface activities exist, but

↳ gaps in knowledge persist



↳ and knowledge generated is often not perceived as credible, relevant or legitimate



↳ **Innovative approach** identifying and integrating relevant expertise from the **whole knowledge community** to answer knowledge needs





EKLIPSE

Knowledge & Learning Mechanism
on Biodiversity & Ecosystem Services

EKLIPSE is foremost a VISION

“To build an innovative, light, ethical
and self-sustainable EU support
mechanism for evidence-informed
policy on biodiversity and ecosystem
services”



EKLIPSE is foremost a VISION

To hand over this mechanism to the wider community once established

To build an innovative, light, ethical and self-sustainable EU support mechanism for evidence-informed policy on biodiversity and ecosystem services

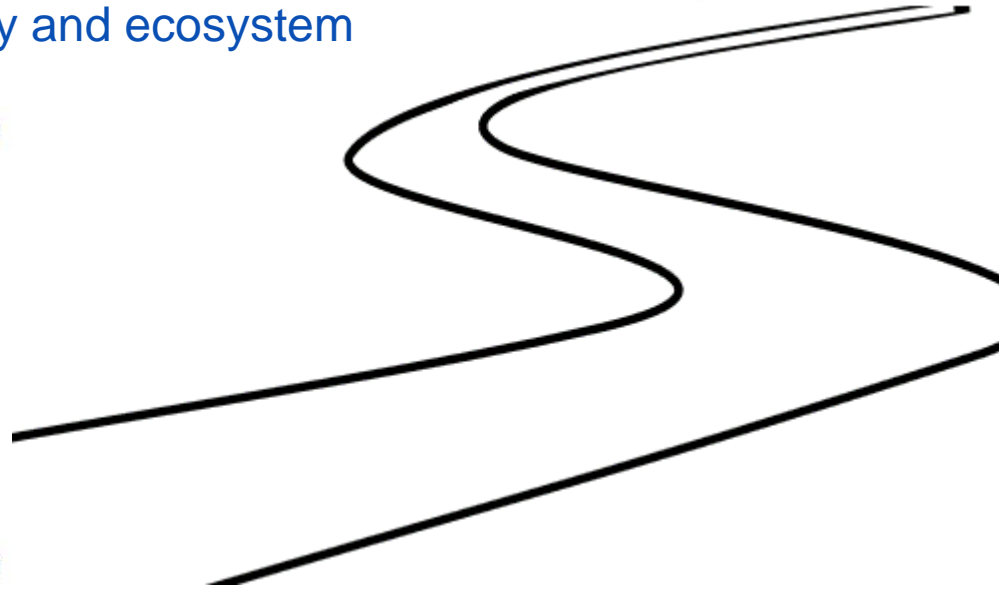


Ethical infrastructure

Joint evidence activities

Bottom-up, self
organising process

Strong focus on
networking

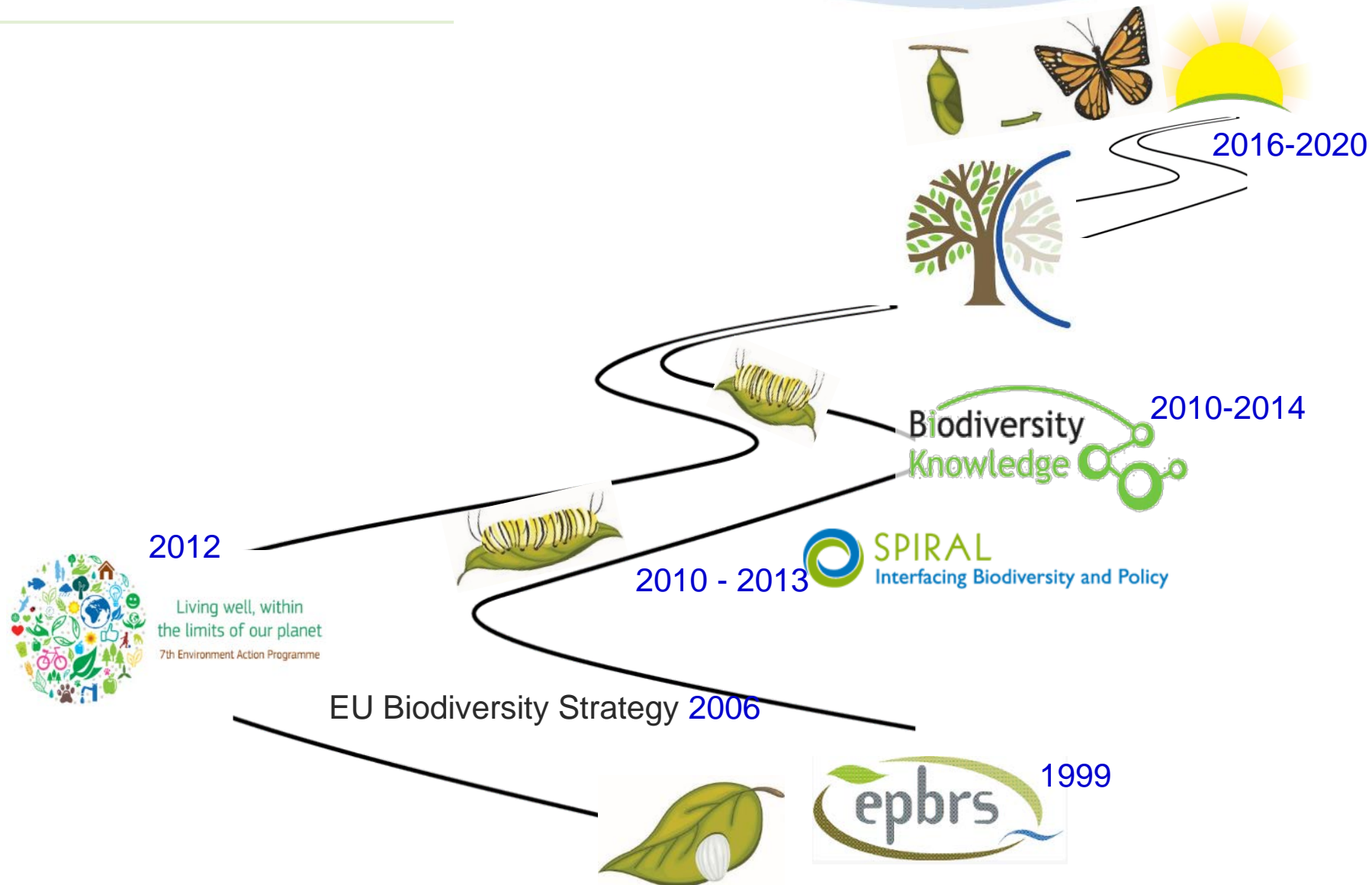


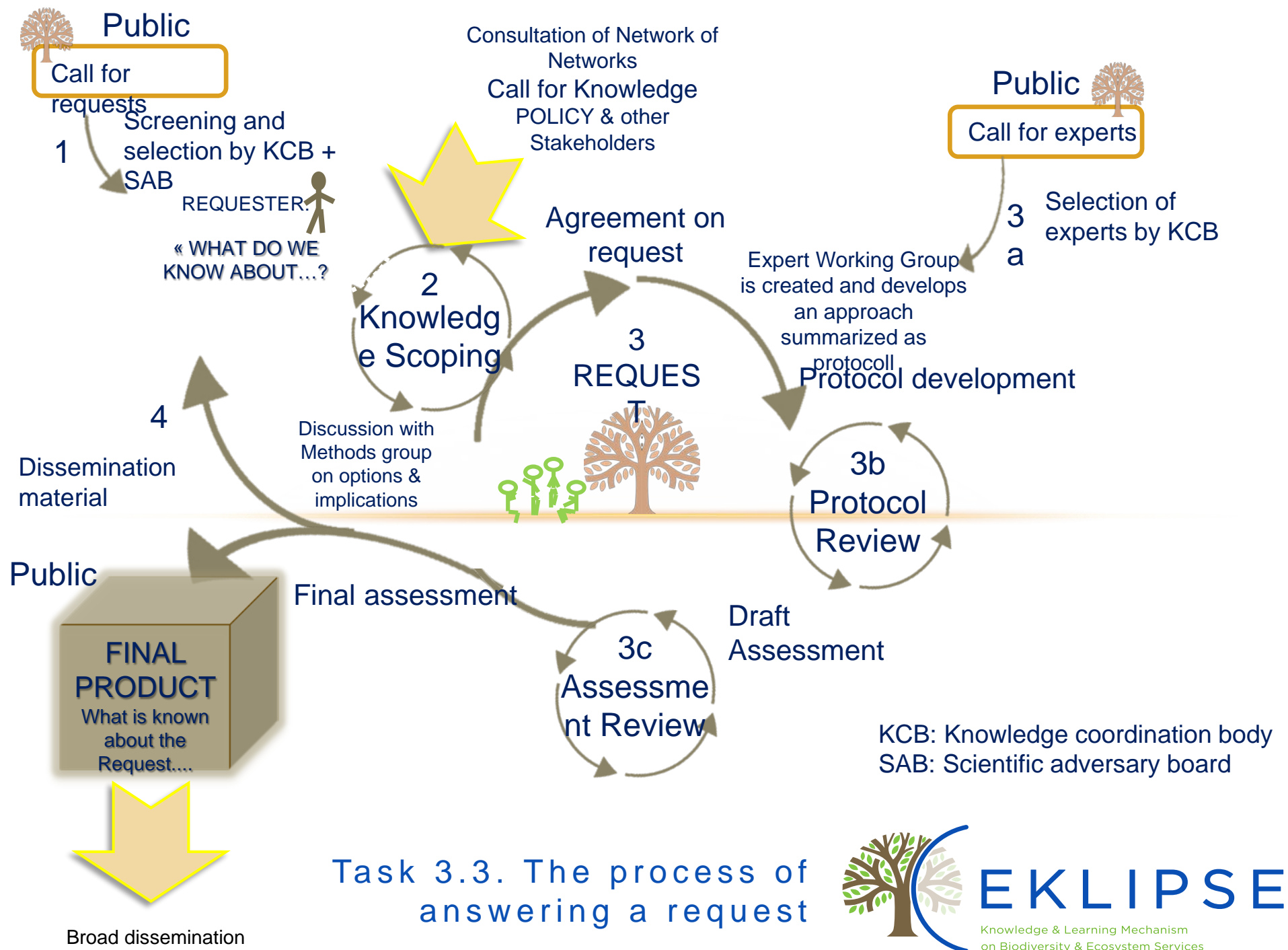


EKLIPSE

Knowledge & Learning Mechanism
on Biodiversity & Ecosystem Services

EKLIPSE: a long and winding road





Engagement methods collect opinions and expert contributions: **what do people think?**

Exploratory methods review and collate existing knowledge: **what does the evidence say?**

Analytical methods compare possible courses of action: **what alternatives do we have?**

Evaluation methods evaluate or predict policy impacts
What consequences might a decision have?

The Network of Networks

- (Further) identify the interests in getting involved (many roles identified so far)
- Provide space for dissemination and learning on SPIs (e.g. conferences, webinars)
- Support the development of a business plan for the Support Mechanism

Individual experts

- Get involved in the EKLIPSE bodies
- Join as expert for specific thematic calls (expert, reviewer), partly funded
- Methods experts on dedicated tasks, funded
- Join discussions in the KNOCK Forum



For more information visit:
www.eklipse-mechanism.eu

Or contact:
secretariat@eklipse-mechanism.eu

Thank you! Questions? Comments?
Your feedback is greatly appreciated!



Developing
a mechanism for
supporting better
decisions on our
environment based
on the best available
knowledge.

THE DIFFERENCE
WE WANT TO
MAKE

HOW CAN WE
MAKE A
DIFFERENCE?

HOW TO GET
INVOLVED?

ACTIVITIES



EKLIPSE is a EU funded project that will set up a sustainable and innovative way of knowing, networking and learning about biodiversity and ecosystem services.

Open calls

Call for knowledge
Call for Knowledge on the effects of
CAP greening measures on
biodiversity and Ecosystem Services

Call for knowledge
Call for Knowledge on **health**
impacts of biodiversity and
Ecosystem Services

Call for knowledge
Call for Knowledge on effects of
electromagnetic radiation on
wildlife

Call for knowledge
Call for Knowledge on supporting
business to go beyond regulation
for biodiversity

GIVE US YOUR FEEDBACK

News from the Network

- New expert report on Knowledge Synthesis Methods is now available. [+]
- EKLIPSE has just published the report from its first request for synthesizing available knowledge from policy makers. [+]
- Draft report of the Joint EKLIPSE/EPBRS/BiodivERsA foresight workshop "Social Innovation and Nature-based-solutions" is available for comments [+]
- Call for Papers - 5th Green Growth Knowledge Platform (GGKP) conference on Sustainable infrastructure, hosted by the World Bank. Deadline: 15 June 2017 [+]



- How would you describe EKLIPSE in three words ?



How are European energy policies affecting biodiversity and ecosystem services in countries globally?

Energy request Expert Working Group,
EKLIPSE Team

Energy Weeks, Brussels 2019

www.eclipse-mechanism.eu

A stylized tree with a brown trunk and branches, and green leaves, positioned on the left side of the slide.

How are European energy policies affecting biodiversity and ecosystem services in countries globally?

Requester: Centre for Development and Environment (CDE) University of Bern



Aim:

Understand the effects of the EU's low-carbon energy policies on global biodiversity and ecosystem services:

- What are the SDG targets affected by the EU energy policy and what are the systemic trade-offs and co-benefits created beyond the territorial boundaries?
- What policies and governance mechanisms could improve these impacts?

How are European energy policies affecting biodiversity and ecosystem services in countries globally?

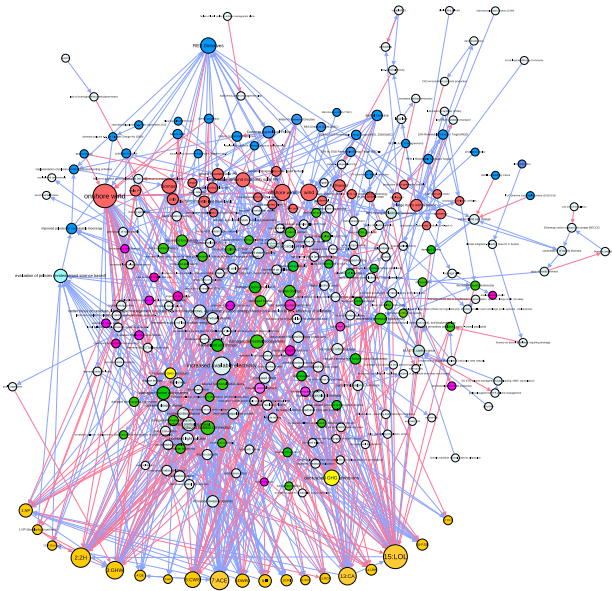
Frame and Context



- The outcome is intended to inform the Independent Group of 15 Scientists (IGS), appointed by former Secretary-General Ban Ki-Moon in 2016 to write the 2019 Global Sustainable Development Report (GSDR), as a tool for the follow-up and review process of the 2030 Agenda for Sustainable Development at the High-Level Political Forum (HLPF).
- To reach the Sustainable Development Goals (SDGs), all countries must move towards the «sweet spot» where human well-being is ensured while safeguarding the environment for future generations and in order to leave no one and no country behind.

How are European energy policies affecting biodiversity and ecosystem services in countries globally?

Methods



- Non-systematic literature review and a participatory expert workshop using a Fuzzy Cognitive Mapping approach.
- Individual mental models of 19 workshop participants (direction and strength of interacting elements of the system)
- Models focused on the impacts of each renewable energy technology (RET) – Mental model tool
- Selected individual models were integrated into a single model using igraph R package and Gephi.

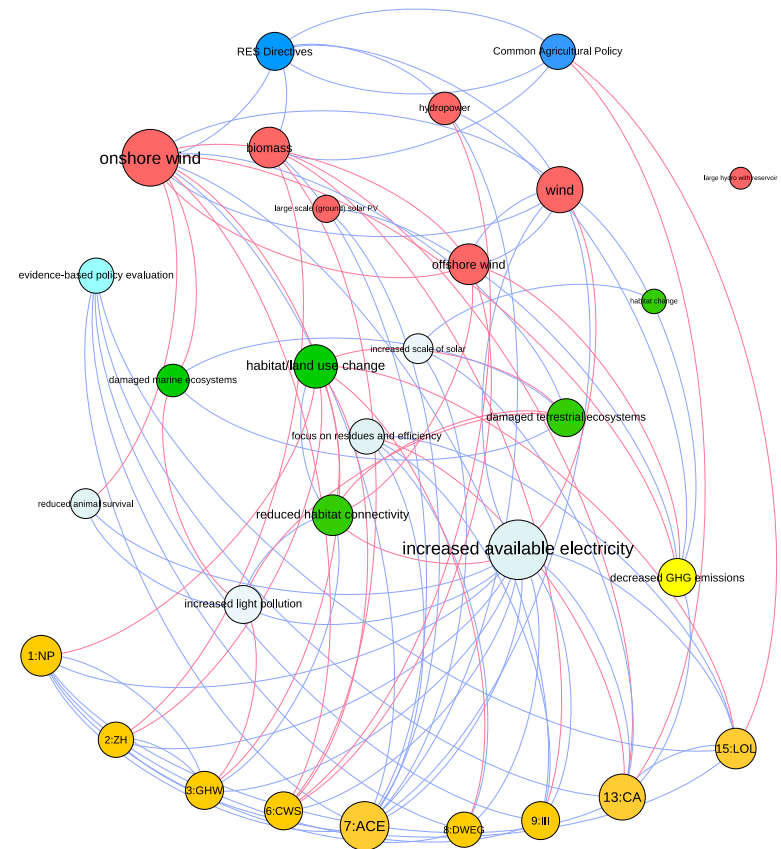
Main Findings (1)

- EU- supported RETs have complex effects on biodiversity and SDGs, but benefits the SDGs on balance, particularly climate related SDGs.
- SGD 15: Life on land is negatively impacted (biodiversity loss, habitat change, fragmentation)
- Spillover effects must be addresses (e.g. RETs may reduce poverty in Europe but increase it in developing countries)
- Disenfranchised groups are at particular risk due to impacts on food security and environmental quality (land use change and displacement)

How are European energy policies affecting biodiversity and ecosystem services in countries globally?

Main Findings (2)

- At the local level, including the installation characteristics and economic aspects can affect RETs impacts and policy implementations.
- Use of rare materials for RETs (e.g. metals), their sourcing and disposal have environmental impacts which must be reduced/ mitigated.





EKLIPSE

Knowledge & Learning Mechanism
on Biodiversity & Ecosystem Services

EXTRASLIDES

An established procedure, its
structure and its logistics

Templates for synthesis processes

Forms

Guidance notes

Log book

Selection processes

Ethical infrastructure

Clear guiding values

Conflict of interest

What does EKLIPSE deliver? Legacy for the EU Mechanism

Documents of Work, Calls for Knowledge, Experts and
Requests

Application form for ... protocol Review form,
Draft Synthesis form

Guidance notes ... of bodies

(Future ... each steps,
time ...)

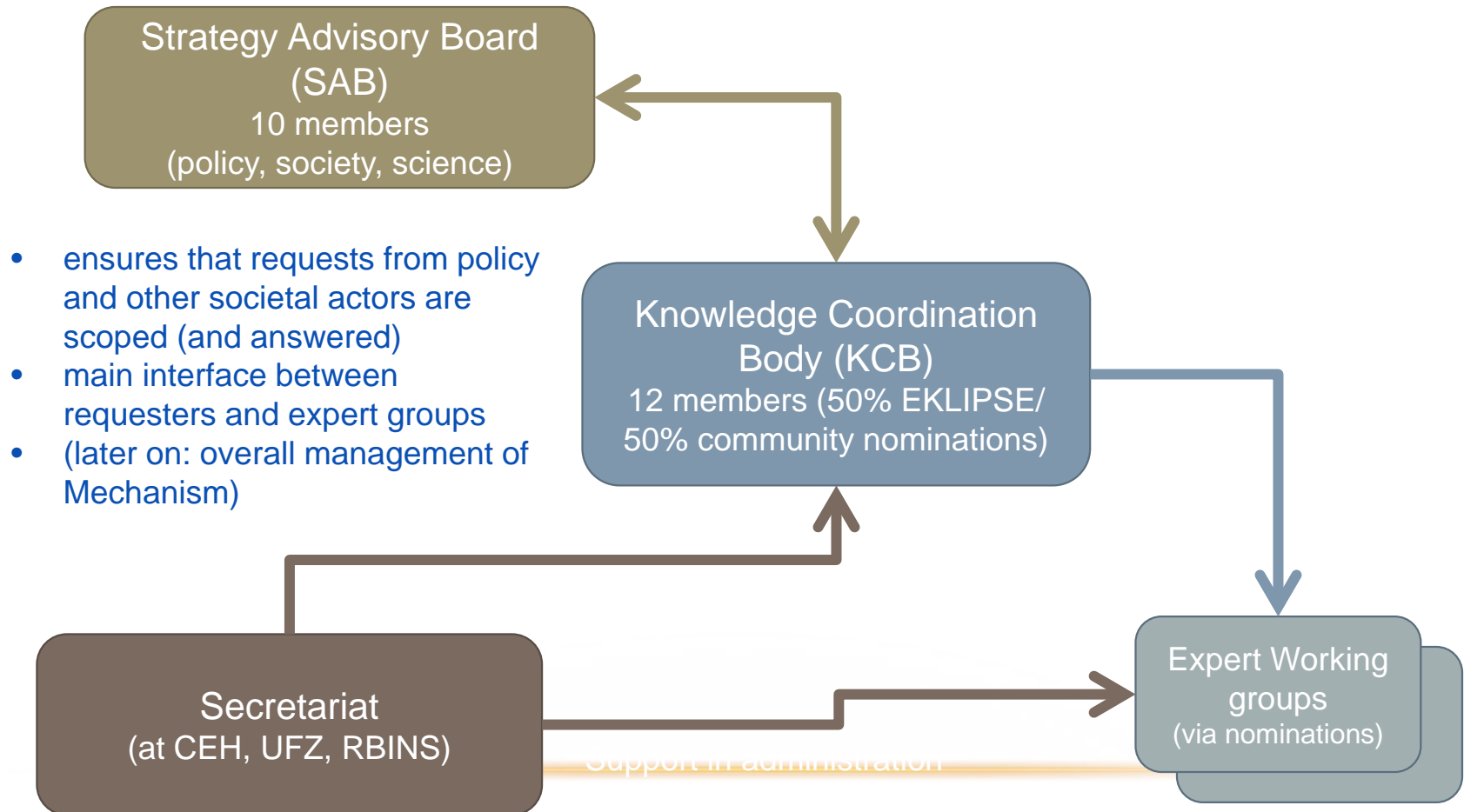
Proc ... es

Code ... tion,
Exce ... as,
Refle ...

Process (and form) for declaration of Conflict of
Interest



What does EKLIPSE offer? (1) A Governance structure

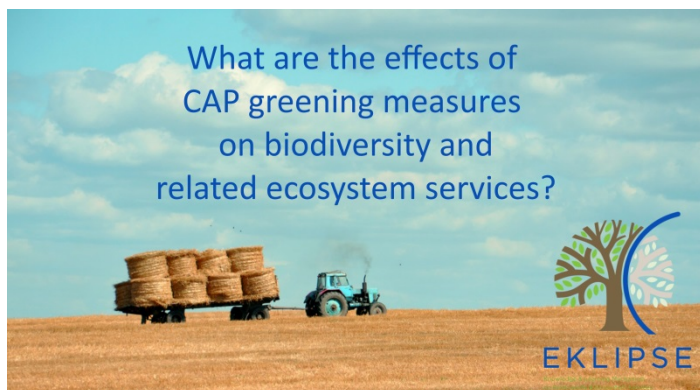




Business Request (Requester: Scottish Environment Protection Agency)



Health Request (Requester: French Ministry of Environment)



Agriculture/CAP Request (Requester: IUCN Regional Office for Europe & Swedish Board of Agriculture)