



EKLIPSE

Knowledge & Learning Mechanism
on Biodiversity & Ecosystem Services

**Lessons learned on current practices
for cross-scale translation of
knowledge on biodiversity and
ecosystem services from the
EKLIPSE Call for Knowledge**

Allan Watt and Jorge Ventocilla

**EKLIPSE is not only a project but
also a vision**

***To hand over this mechanism to the
wider community once established***

***To build an innovative, light,
ethical and self-sustainable EU
support mechanism for evidence-
informed policy on biodiversity
and ecosystem services***



Ethical infrastructure

**Bottom-up, self
organising process**

**Strong focus on
networking**





Developing a mechanism for supporting better decisions on our environment based on the best available knowledge.

CALLS

ACTIVITIES

EKLIPSE COMMUNITY

KNOCK Forum

MAKING A DIFFERENCE



Open calls

News

3rd Call for Requests
Invitation to request knowledge for informed decision-making:
Please submit your request via our online form by 30th June 2018

2nd Call for KCB
Call for nominations for members of the Knowledge Coordination Body:
Please submit your application by 15th June 2018

GIVE US YOUR FEEDBACK

Our 3rd Call for Requests "Invitation to request knowledge for informed decision-making" is now open. Please submit your request via our online form by 30th June 2018

Lynn Dicks, Chair of the EKLIPSE Methods Expert Group, comments on Mongabay's Conservation Effectiveness series, citing the EKLIPSE methods guidance notes as a means to achieve higher methodological standards. Read more

EKLIPSE capacity building event - Networking for the landscape: The potential of collaborative governance in addressing institutional misfit in the provision of ecosystem services", took place on Monday April 16th. Read more here.

Do cities use science when planning for infrastructure projects? Do scientists share their knowledge with urban policy makers? The European Commission's EnRoute project is conducting a short online survey to investigate how scientists and policy makers interact in cities when planning and implementing projects. Click to start the survey.

Interplays of science, policy and society for planetary wellbeing: meaningful science communication and outreach on European scale. EKLIPSE and DBT Capacity building course on science communication in Jyväskylä, Finland on June 11th. Read more here.

Building the Capacity of EU early career researchers to operate effectively at the Science-Policy-Society interface. Applications are now open for this workshop to be held 17th to 20th June 2018, in Croatia. More information here.

Informed decision making for planetary wellbeing: the challenge of science-policy-society interfacing in the European context EKLIPSE symposium in ECCEB 2018 University of Jyväskylä, Finland, 12th -15th of June 2018. More information here.

Current requests



CAP activities

Health activities

Business activities

EMR activities

Videos



EKLIPSE - The Process of Answering a Request

EKLIPSE Science café on how to integrate the diverse values of nature into our decisions

EKLIPSE - BiodivERsA Webinar - Questions to the Panel

EKLIPSE - BiodivERsA Webinar - Carsten Nesshöver presentation and Poll 3-4

Project and partners

- EKLIPSE funded as CSA in H2020: February 2016 – January 2020

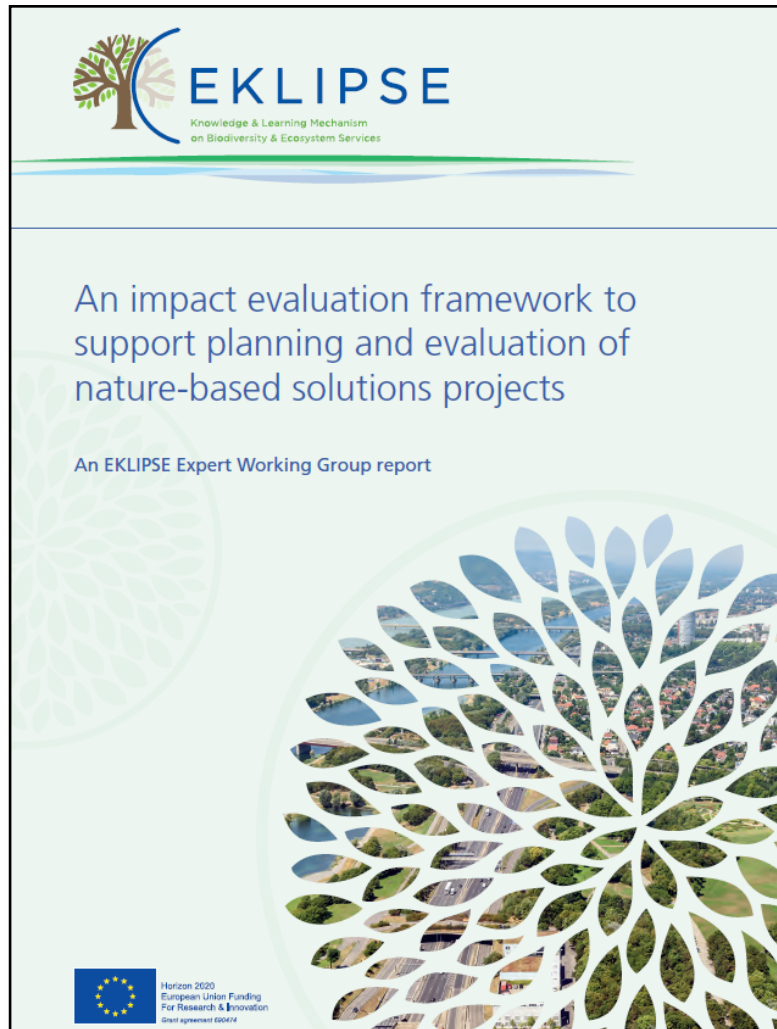
- Ten partner institutions facilitating wider involvement:

- CEH
- UFZ
- RBINS
- SYKE
- ISOE
- FRB
- ESSRG
- TIAMASG
- UEA
- University of Porto



EKLIPSE functions

1. Knowledge synthesis



Knowledge synthesis
answering questions from
policy & society to provide
evidence leading to better
informed decision-making e.g.

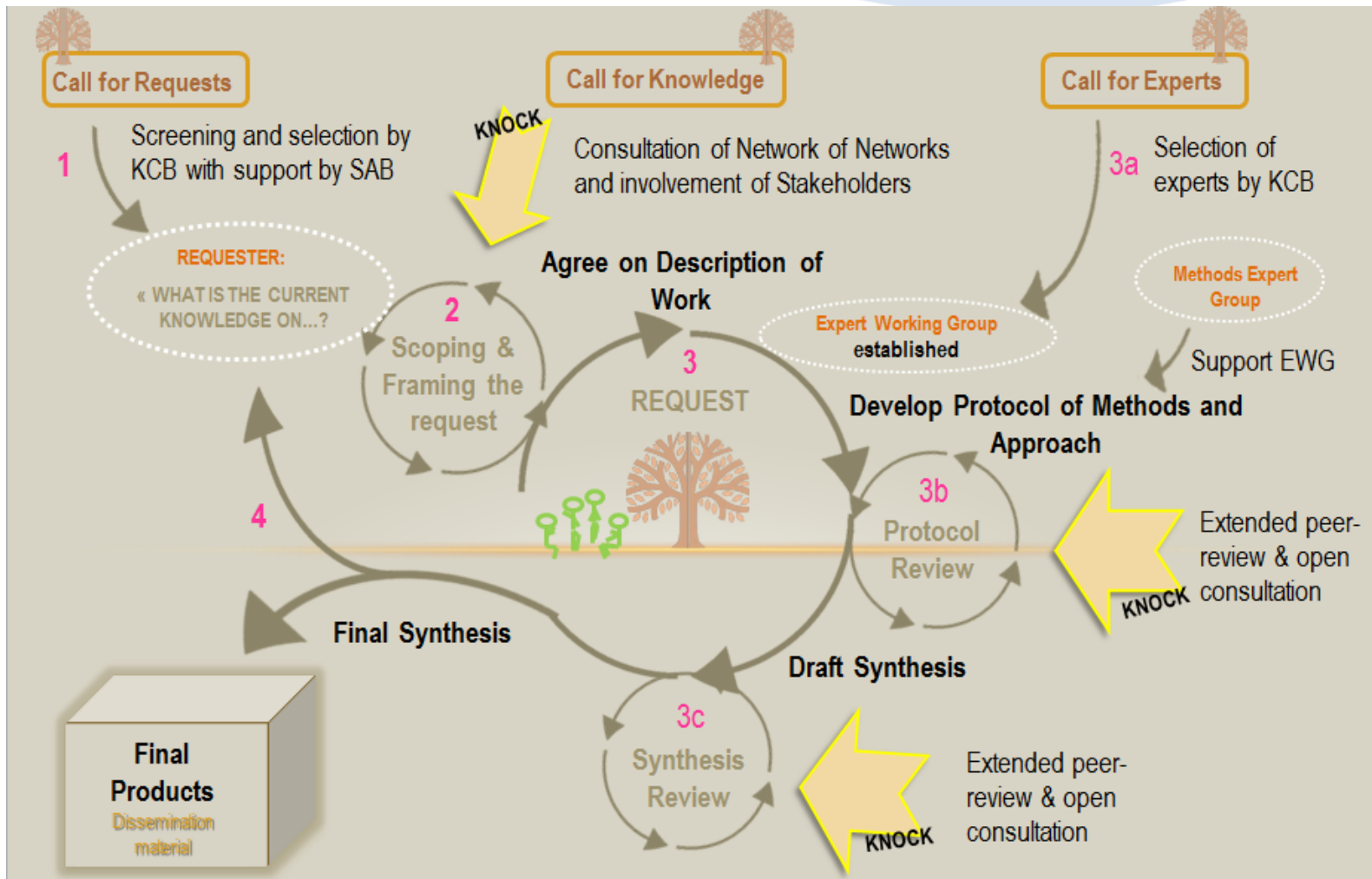
- An impact evaluation framework to support planning and evaluation of nature-based solutions projects in urban contexts (DG R&I).
- Which types of urban and peri-urban blue/green spaces have a significant impact on human mental health and well-being (French Ministry of the Environment)?



EKLIPSE

Knowledge & Learning Mechanism
on Biodiversity & Ecosystem Services

EKLIPSE knowledge synthesis process



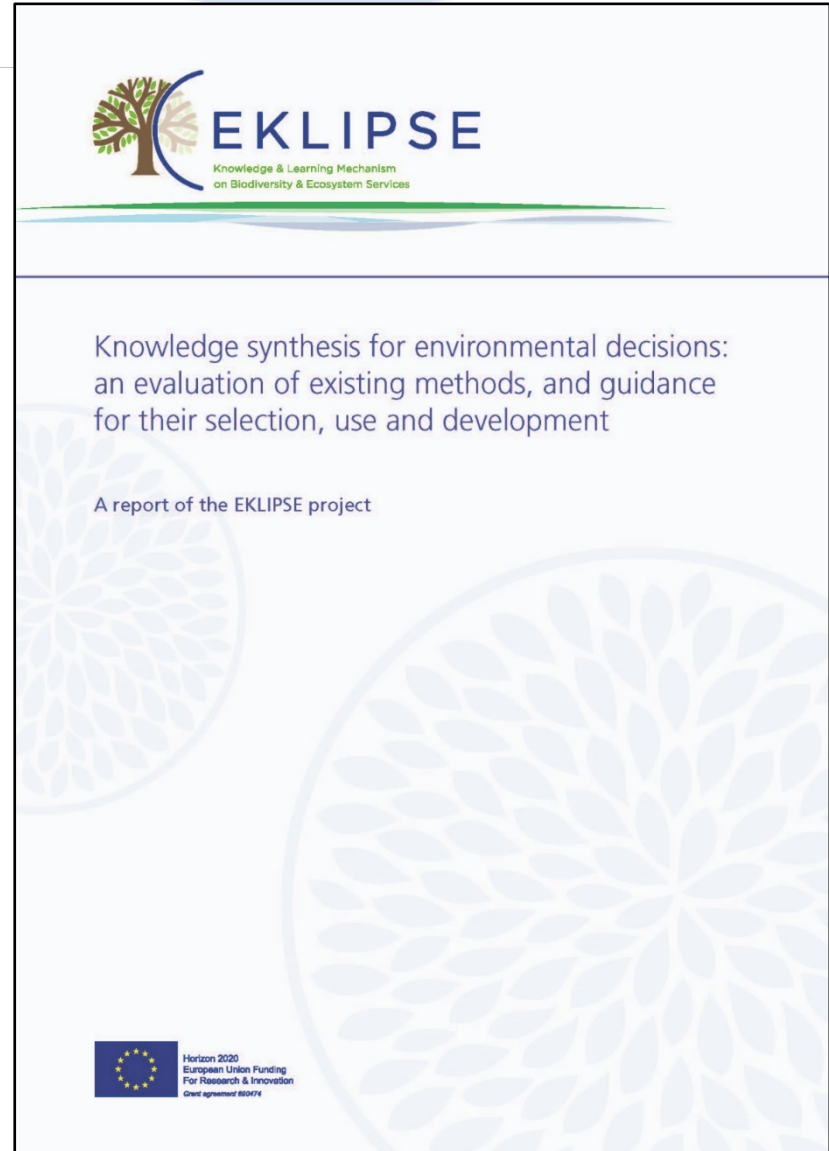
KCB: Knowledge Coordination Body

SAB: Strategic Advisory Board

KNOCK: Knowledge Network and Open Community Forum

- EKLIPSE decision support for selecting knowledge synthesis methods
 - Guidance notes to assist selection of methods
 - Report and fact sheets on 20 knowledge synthesis methods

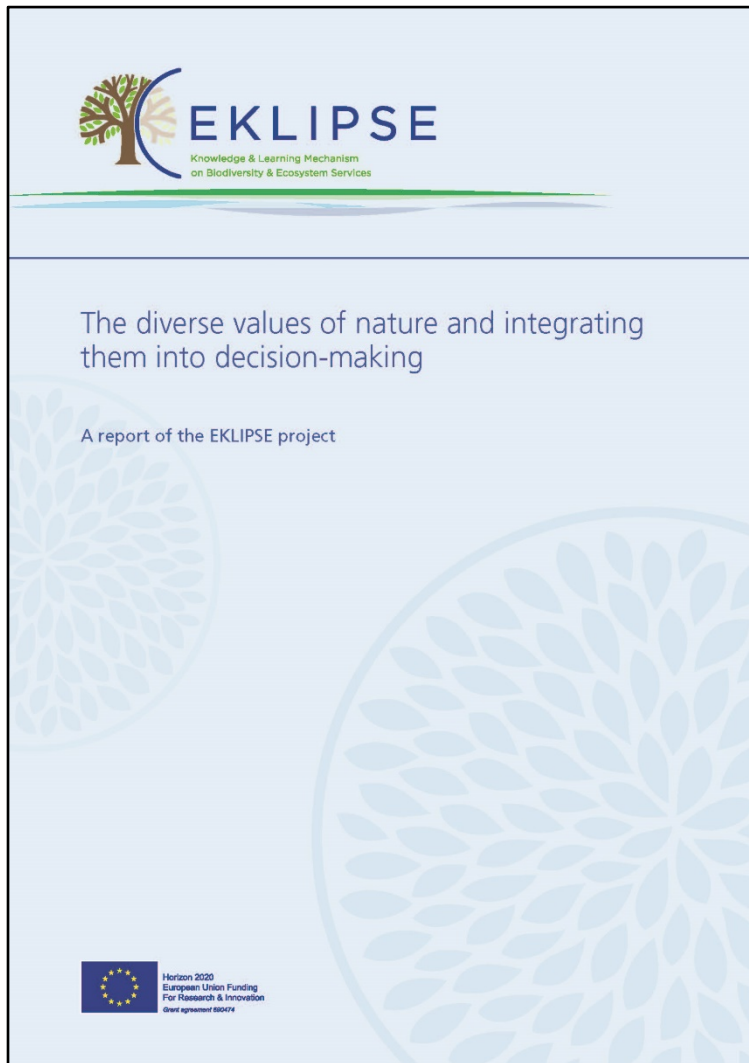
Dicks LV, Haddaway N, Hernández-Morcillo M, Mattsson B, Randall N, Failler P, Ferretti J, Livoreil B, Saarikoski H, Santamaria L, Rodela R, Velizarova E, and Wittmer H. 2017. Knowledge synthesis for environmental decisions: an evaluation of existing methods, and guidance for their selection, use and development – a report from the EKLIPSE project.



Identifying research needs and emerging issues through engagement of society, research and policy actors related to biodiversity and ecosystem services e.g.

- What evidence is there for the impact of electromagnetic radiation on wildlife and what research is needed in the future (Buglife)?





Encouraging societal debate on and engagement with relevant policy and research on biodiversity and ecosystem services e.g.

- How can nature's diverse values be incorporated into policy (ClientEarth)?



Promoting the engagement and capacity of networks whose knowledge has a key potential impact on biodiversity and ecosystem services e.g.

- How can the ecosystem service concept be used in the management of Natura 200 and other sites managed for nature (Eurosites)





EKLIPSE

Knowledge & Learning Mechanism
on Biodiversity & Ecosystem Services

**EKLIPSE: working with requests
from policy and society**

Request from policy or society



EKLIPSE

Knowledge & Learning Mechanism
on Biodiversity & Ecosystem Services

**EKLIPSE: working with requests
from policy and society**

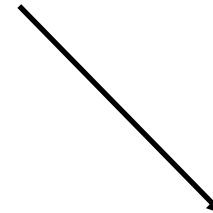
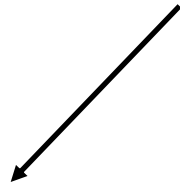
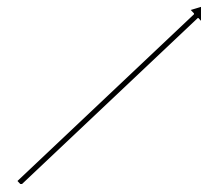
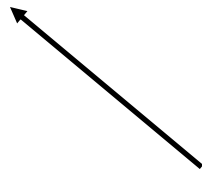
Knowledge synthesis

Research needs

Request from policy or society

Societal engagement

Capacity building





Request from policy or society



- What needs to be done to better integrate research and knowledge on biodiversity and ecosystem services from the global to the European level, and vice versa?
- Call for knowledge
 - Questionnaire
 - Interviews
- Workshop 1st June 2018



- ✓ A global player
- ✓ Availability of funds (Horizon2020, LIFE, ...)
- ✓ Availability of data (assessments, trends, ...)
- ✓ Formal mechanisms (Directives) vs Informal mechanisms (Global Assessments)
- ✓ Having a “common” research agenda



- ✓ There isn't a one size fits all and there is a need for flexibility - nature does not stick to rules
- ✓ Some argue that data-science require an interphase in the same way that science-policy does
- ✓ The EU needs to “connect” within itself before being able to have an effect at global level



- ✓ Need for improved communication on opportunities for researchers to engage in global processes, and on outcomes of political fora
- ✓ Capturing both scientific knowledge and institutional knowledge (grey literature etc.)
- ✓ A perception that the global scale has little additional to offer



- **What works well, what doesn't work so well and why** in translating the outcomes of global science-policy processes on biodiversity and ecosystem services into action at the European scale?
- **What works well, what doesn't work so well and why** in translating the outcomes of European science-policy processes on biodiversity and ecosystem services into action at the global scale?
- **How could processes be adapted to better fit the needs at the EU scale?**
- **What are the priority knowledge or research needs that should be addressed at the EU scale?**

For more information visit:
www.eclipse-mechanism.eu

3rd Call for Requests
Invitation to request knowledge for
informed decision-making:
Please submit your request via our
online form by 30th June 2018

Or contact:
secretariat@eclipse-mechanism.eu

Twitter: [@EKLIPSE_project](https://twitter.com/EKLIPSE_project)

