



BiodivERsA's approach & role in assessing biodiversity research priorities

**Hilde Eggermont (BiodivERsA Vice-Chair)
Frédéric Lemaitre (BiodivERsA SSI/SPI Officer)
Xavier Le Roux (BiodivERsA CEO)**



BiodivERsA : network of organisations programming and funding research on biodiversity and ecosystem services, and NbS across European countries and territories

BiodivERsA1: FP6 ERAnet 2005-2010 (13 countries)

BiodivERsA2: FP7 ERAnet 2010-2014 (15 countries)

BiodivERsA3: H2020 ERAnet 2015-2019 (23 countries – 35 partner organisations)

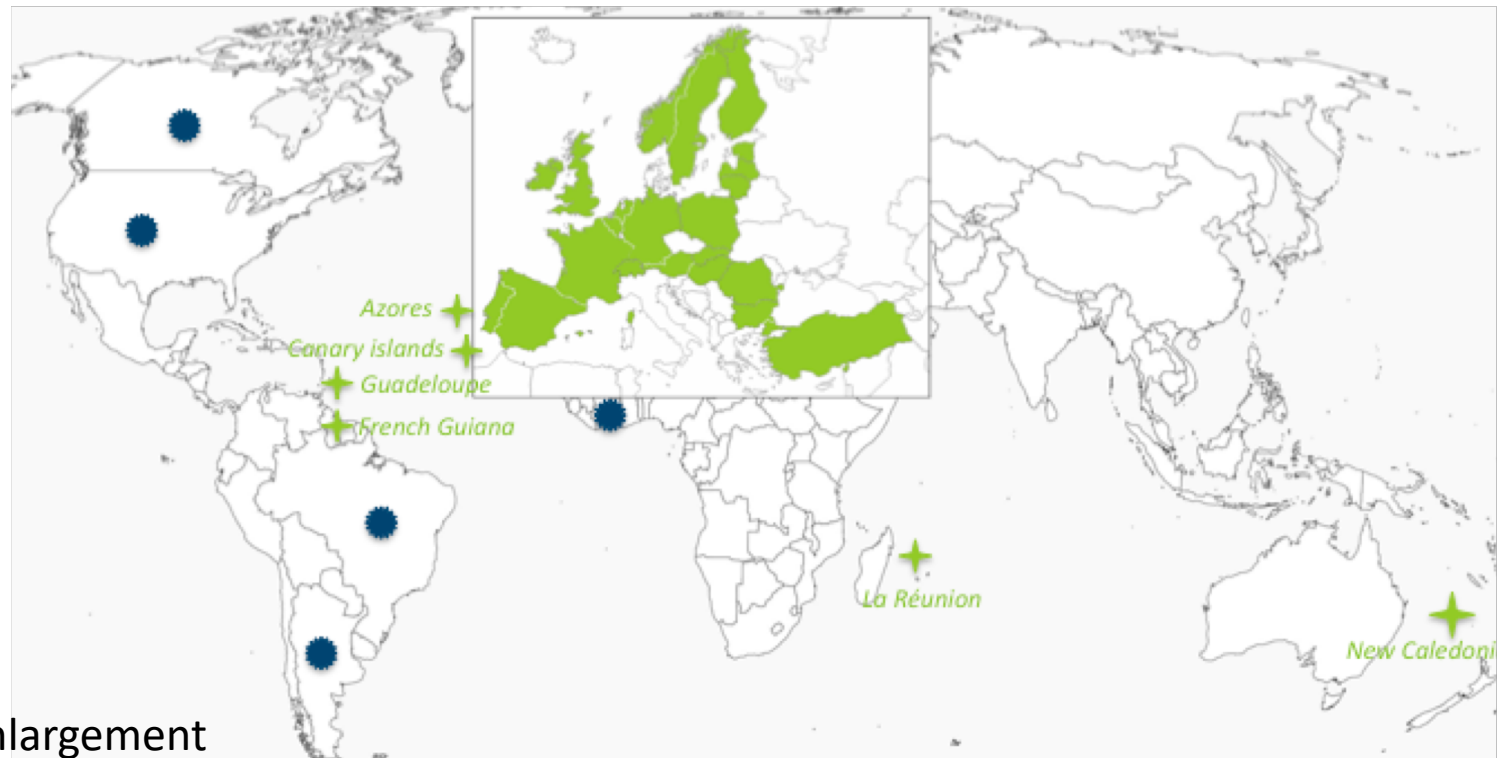
BiodivERsA Partnership (came into force this week!)

- Promote cooperation and collaboration among national and local research programmers and funders, with strong link with the European Commission, towards joint programming;
- Increase science-society and science-policy interfacing throughout the whole research process;
- Promote R&I for the benefit of biodiversity, society, economy and human well-being.



BiodivERsA: Europe and its Overseas, and beyond

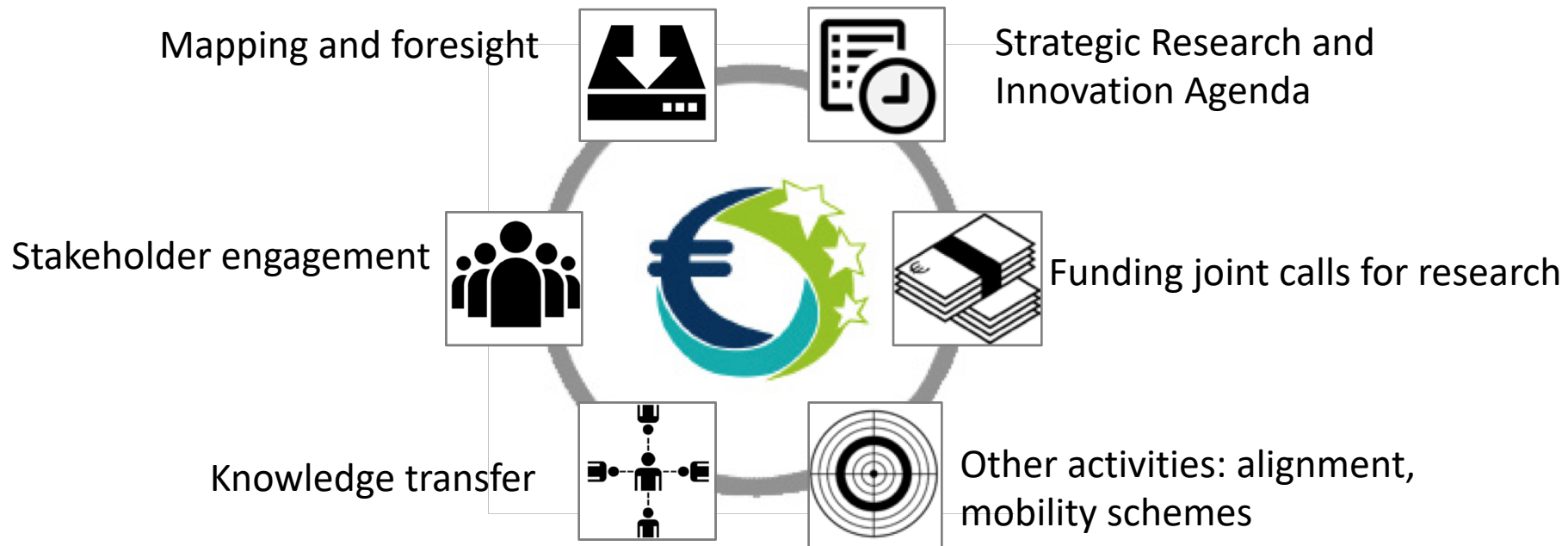
BiodivERsA integrates national programmes & funds to achieve resource efficiency and synergy, and build up the European Research Area for Biodiversity, ES and NbS



- Continuous enlargement
 - Internationalisation
- => CRITICAL MASS!

Green: BiodivERsA partners
Blue: international partners in BiodivERsA calls

Main functions of BiodivERsA

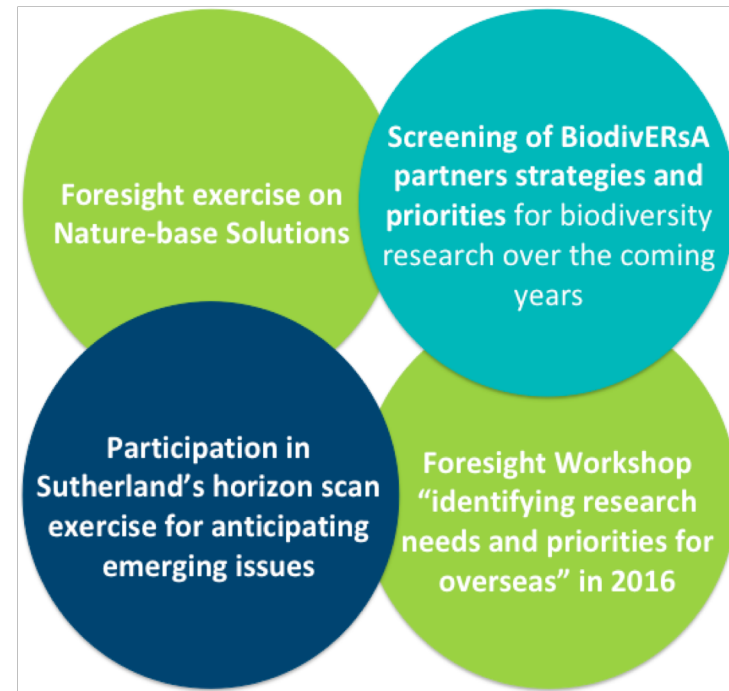
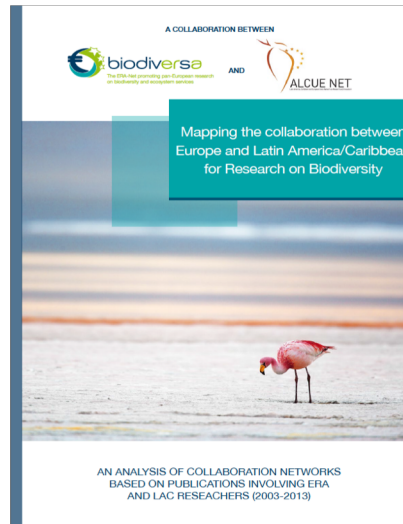


Mapping and foresight activities

The BiodivERsA database for a comprehensive view on research programmes and projects within Europe



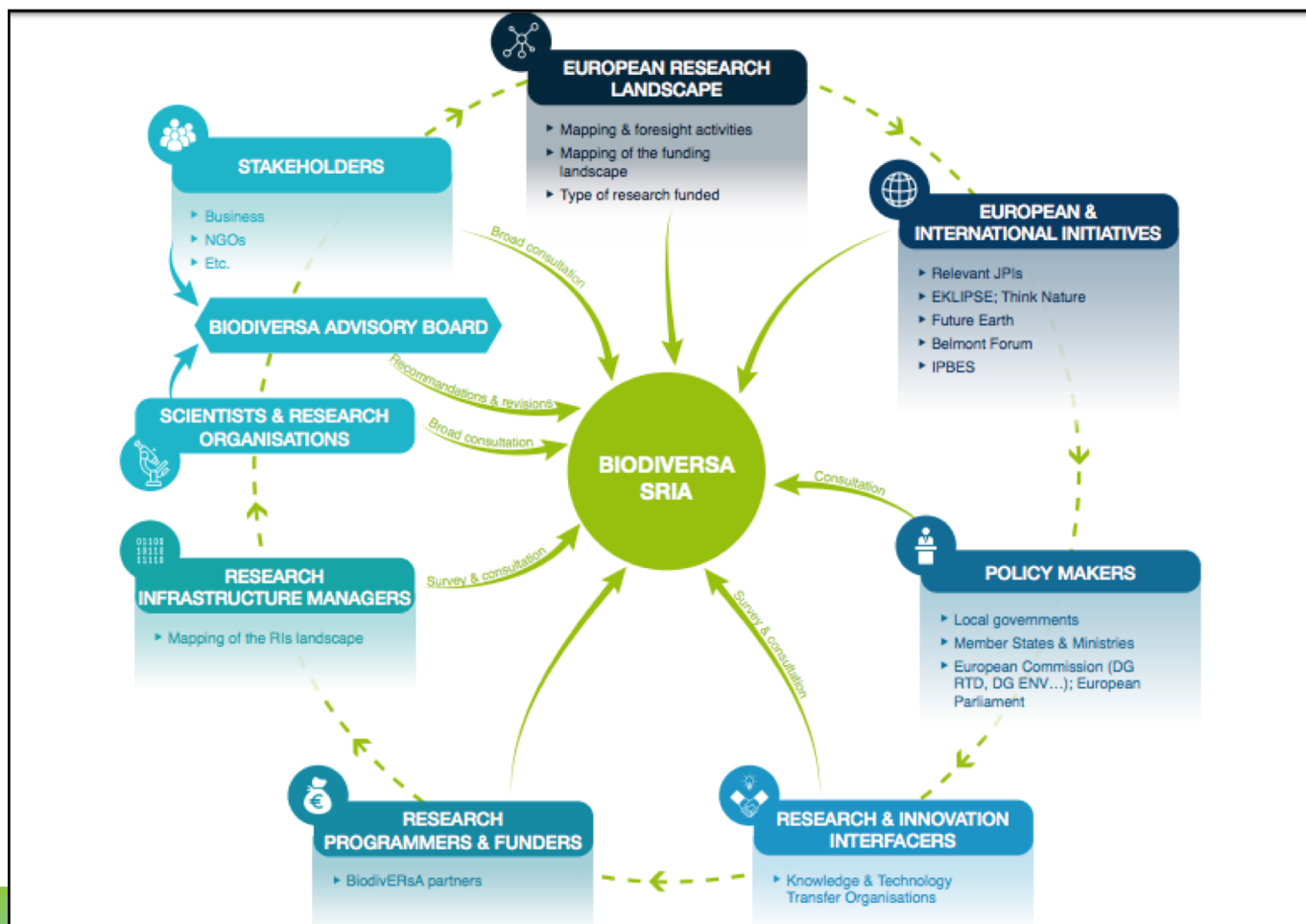
Mapping research collaborations between Europe and other regions (e.g., ERA-LAC collaboration analysed with ALCUE-NET)



And also on-going:

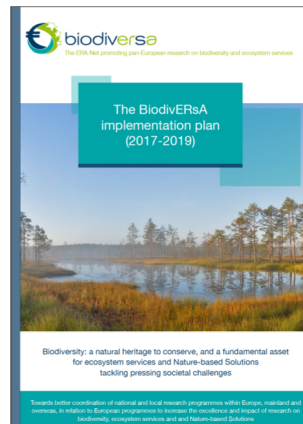
- Mapping research infrastructures in Europe
- Mapping Knowledge and Tech. Transfer Organisations

MULTISTAKEHOLDER APPROACH USED FOR DEVELOPING THE BIODIVERSA STRATEGIC RESEARCH & INNOVATION AGENDA (SRIA)

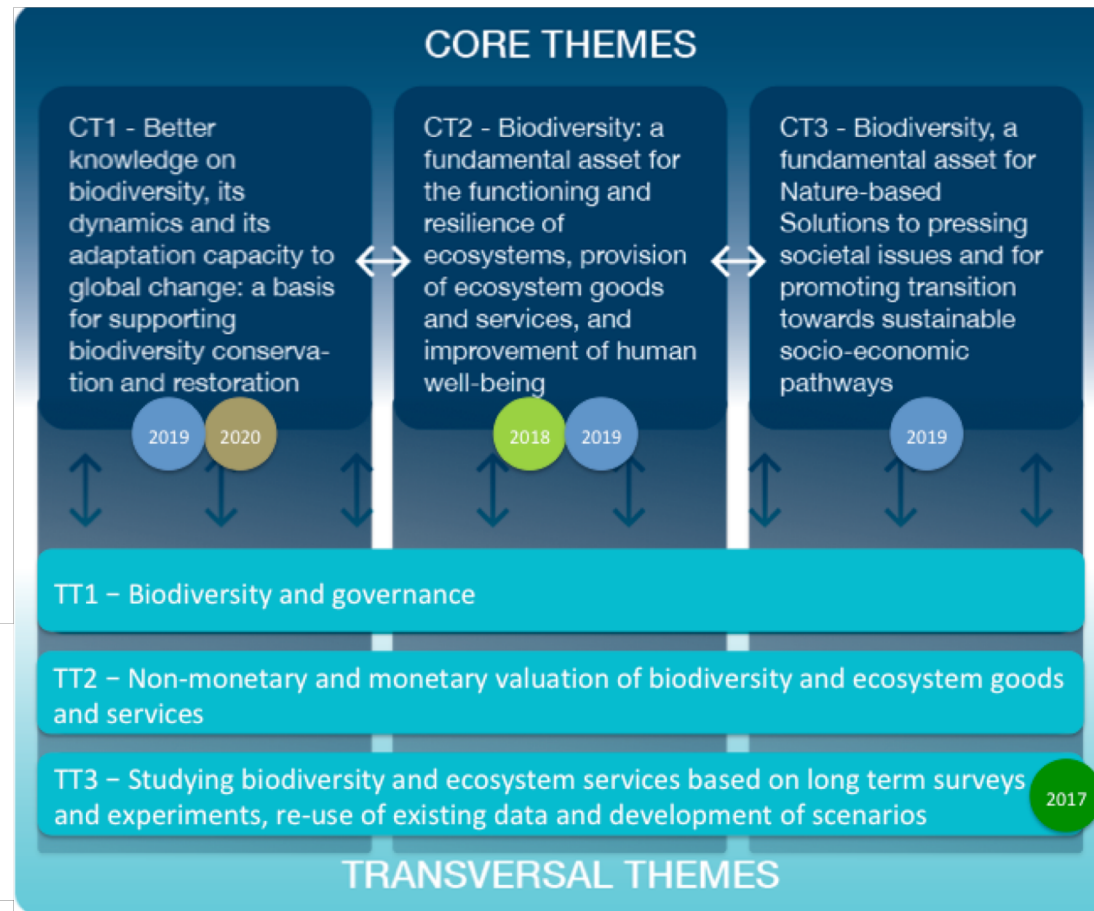
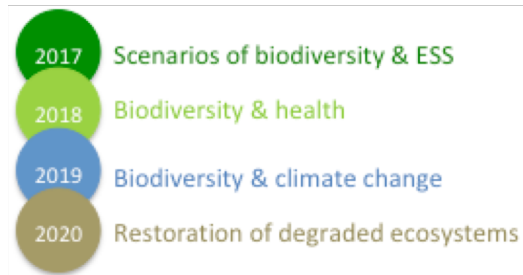


Shared strategy and priorities

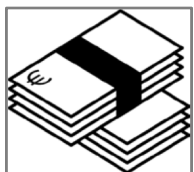
Developing a long-term vision and identifying common research priorities between BiodivERsA partners



BiodivERsA SRIA and 2017-2019 implementation plan, available at www.biodiversa.org



BiodivERsA research funding opportunities

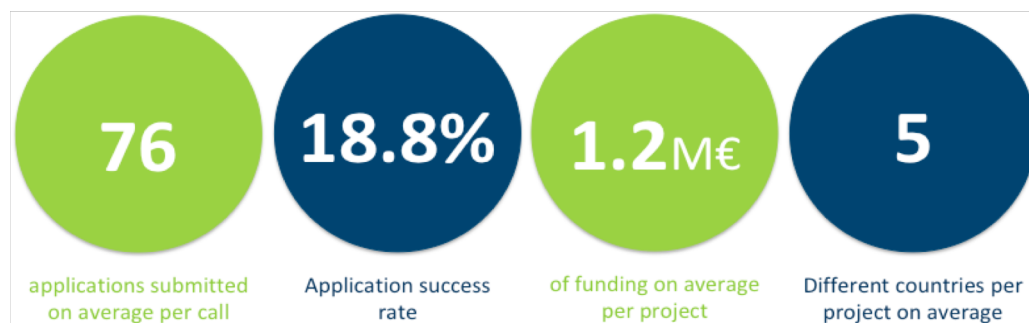


Launching Joint Calls for medium-sized projects (specific evaluation criteria: policy relevance, societal impact, stakeholder engagement)



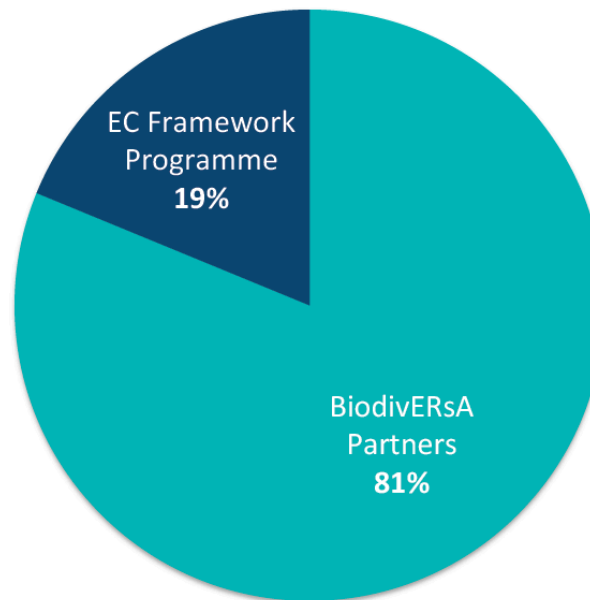
raised by BiodivERsA Partners and
the EC

** incl. tentative figures for the 2017 Call*



BiodivERsA and EC: Complementary roles

In Europe and over 2004-2016, BiodivERsA partners and EC manage 81% and 19% of funding through competitive programmes for biodiversity research, respectively



Source: BiodivERsA database

Knowledge brokerage and results uptake

POLICY



PRIVATE SECTOR

e.g. BiodivERsA R&I workshops for funded projects

- New research/business collaborations
- New R&I activities for BiodivERsA

PRACTITIONERS

e.g. exploring collaboration with LIFE



EUROPEAN & INTERNATIONAL INITIATIVES

e.g. EKLIPSE; OPPLA; ThinkNature; Belmont Forum; JPIs; IPBES





BiodivERsA-IPBES: a two-way street

BiodivERsA feeds new knowledge and tools into the IPBES assessments and policy support tools

- Based on a review of the ECA assessment SOD (May 2017), there are **at least 9 BiodivERsA projects** that have results included in the assessment, with **at least 11 references and 1 success story** directly traceable to synthesised results provided by BiodivERsA through its SSI/SPI officer.
- BiodivERsA was cited by the ECA assessment TSU as an example** of how to efficiently contribute to IPBES assessments
- BiodivERsA produces relevant tools to be considered in the **IPBES policy support tools catalogue**



BiodivERsA-IPBES: a two-way street

Research needs and knowledge gaps identified in IPBES assessments are accounted for when defining and implementing BiodivERsA priorities

- The **BiodivERsA Strategic Research and Innovation Agenda** and its implementation plan
 - The BiodivScen joint action between BiodivERsA and the Belmont Forum: **recommendations and research needs of the IPBES methodological assessment** on scenarios and modelling have been accounted for and are included in the scientific text of the international call for research projects, as well as in a number of other activities (mapping and foresight; capacity building, science-policy interfacing..) planned under this action.
- => **BiodivERsA tangibly supports the IPBES objective of catalysing new knowledge**



SUMMARY

The BiodivERsA partnership:

- Key role for joint programming of solution-oriented research on biodiversity, ecosystem services and nature-based solutions at a Pan-European scale
- Critical mass to coordinate research with a broad geographical coverage across Europe (mainland + overseas), and with strong cooperation with non-EU research funders
- Demonstrated openness and capacity to cover trans-sectoral issues through collaboration with EU and international initiatives
 - two-way street
 - need for dedicated resources (people) to fully understand the global processes, to allow for timely follow-up and to monitor the uptake of research
 - more heavily than strictly pan-European approach
 - positive experience (increased visibility + academic & policy impact)

➔ Complementary role with EC



Find out more about BiodivERsA

www.biodiversa.org



@BiodivERsA3



BiodivERsA3 is funded by European Commission part of its H2020 programme